



**CORAIL**



**ALGUES**



**ETOILES DE MER**



**CRABE**



**VOILIER**



**BATEAU**



**BALEINE**

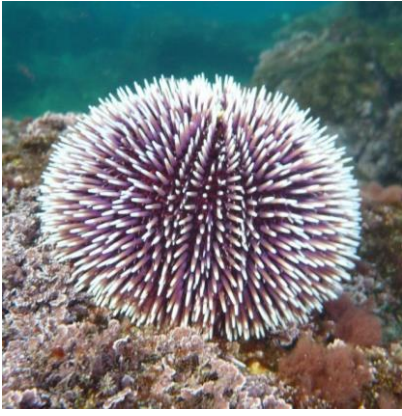


**POISSON GLOBE**



**PHARE**





OURSIN



COQUILLAGES



REQUIN  
MARTEAU



HUITRE



MOULES



MEDUSES



HIPPOCAMPE



POISSONS



ANEMONE



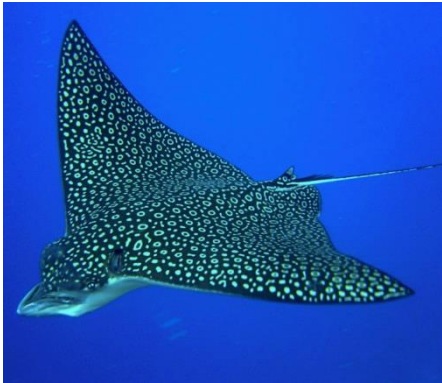
TORTUE



POISSON CLOWN



CREVETTE



RAIE



PIEUVRE



HOMARD



CALAMAR



REQUIN



BERNARD  
L'HERMITE

